

## Mast lift

*(Guide only)*

### BEFORE USE

1. Read and understand the Hazard Assessment Sheet.
2. An operator must not accept operating responsibilities until adequate training has been given by competent and authorised persons.
3. Allow only those authorised and qualified personnel to operate the machine who have demonstrated that they understand the safe and proper operation and maintenance of the unit.
4. Ensure that regular maintenance has been carried out.
5. All operating personnel must be familiar with the emergency controls and emergency operation of the machine as specified in this manual.
6. Avoid accumulation of debris on platform deck. Keep mud, oil, grease, and other slippery substances from footwear and platform deck.



**Stay alert, don't get hurt**

### TRANSPORT

**Maximum towing speed 80km/h.**

### GENERAL PRECAUTIONS

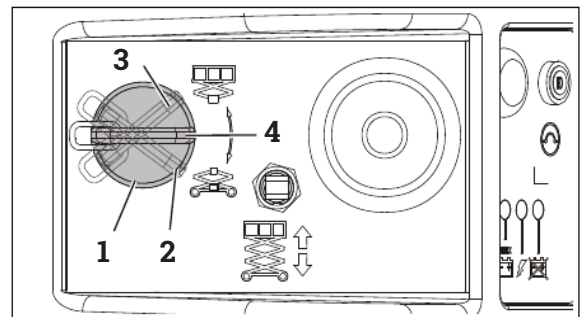
1. Do not use the machine for any purpose other than positioning personnel, their tools, and equipment.
2. Before operation, the user must be familiar with the machine capabilities and operating characteristics of all functions.
3. Never operate a malfunctioning machine. If a malfunction occurs, shut down the machine. Remove the unit from service and notify the proper authorities.
4. Do not remove, modify, or disable any safety devices.
5. Never slam a control switch or lever through neutral to an opposite direction. Always return switch to neutral and stop before moving the switch to the next function. Operate controls with slow and even pressure.
6. Hydraulic cylinders, other than the outrigger cylinders, should never be left at end of travel (fully extended or fully retracted) before shutdown or for long periods of time. Always "bump" control in opposite direction slightly when function reaches end of travel. This applies both to machines in operation or in the stowed position.
7. Do not allow personnel to tamper with or operate the machine from the ground with personnel in the platform, except in an emergency.
8. Do not carry materials directly on platform railing unless approved by Hiredepot.
9. When two or more persons are in the platform, the operator shall be responsible for all machine operations.
10. Always ensure that power tools are properly stowed and never left hanging by their cord from the platform work area.

- Do not assist a stuck or disabled machine by pushing or pulling except by pulling at the chassis tie-down lugs.
- Stow platform assembly and shut off all power before leaving machine.

## OPERATING PROCEDURE

### Platform/ground select switch

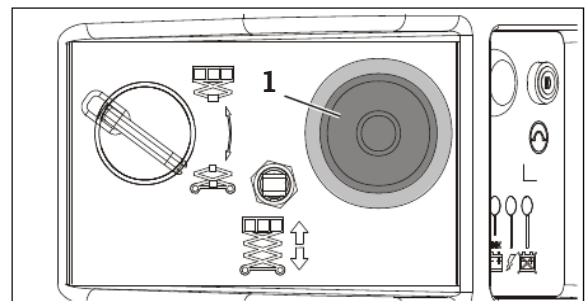
The **power selector switch (1) on the Ground Control Station** functions to direct electrical power to the desired control station. With the switch in the **ground position (2)**, power is supplied to the emergency stop switch at the ground control station. When the switch is in the **platform position (3)**, power is supplied to the emergency stop switch at the platform control station. The switch should be in the **off position (4)** when parking the machine overnight.



Platform/Ground Select Switch

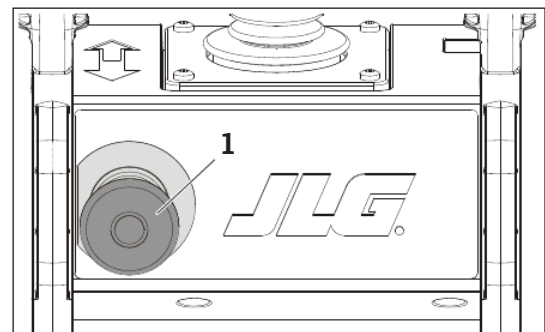
### Emergency stop switch

This **emergency stop switch (1)**, when in the on (out) position, provides electrical power to the ground controls or platform controls, as applicable. In addition, the switch can be used to turn off power (push the switch IN) to the function controls in the event of an emergency.



Ground control - emergency stop switch

The platform **emergency stop switch (1)**, when in the on (out) position, provides electrical power to the platform controls. Push the switch (in) to turn off power to the platform function controls in the event of an emergency.



Platform control - emergency stop switch

### Raising and lowering platform

**WARNING: DO NOT RAISE PLATFORM EXCEPT ON A SMOOTH, FIRM AND LEVEL SURFACE FREE OF OBSTRUCTIONS AND HOLES.**

**TO AVOID SERIOUS INJURY, DO NOT OPERATE MACHINE IF ANY CONTROL LEVERS OR TOGGLE SWITCHES CONTROLLING PLATFORM MOVEMENT DOES NOT RETURN TO THE OFF OR NEUTRAL POSITION WHEN RELEASED.**

**IF THE PLATFORM DOES NOT STOP WHEN A CONTROL SWITCH OR LEVER IS RELEASED, USE THE EMERGENCY STOP SWITCH TO STOP THE MACHINE.**

**NOTE: On the platform controller, when selecting between the Lift/Drive functions the joystick controller must be in the neutral position for 3 seconds before the function change is effective. The machine is inoperable before this time.**

- If the machine is shut down, place the platform/ground select switch to the desired position (platform or ground).
- Position both the ground control station and platform control station emergency stop switches to the on position.

### Raising and lowering platform from ground control system

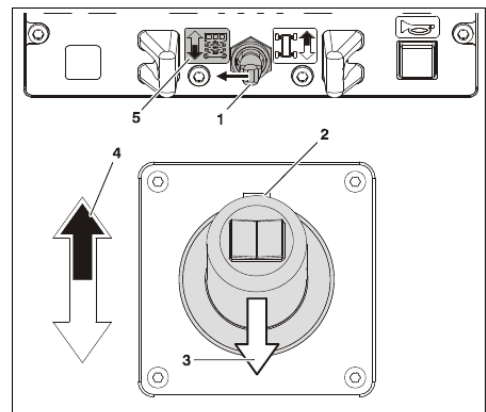
**If operating from the ground controls:** Position the lift switch (1) to up and hold until desired elevation is achieved.

**WARNING: DO NOT OPERATE FROM GROUND CONTROL STATION WITH PERSONNEL IN THE PLATFORM EXCEPT IN AN EMERGENCY.**

**1. If operating from the platform controls:**

Set the **lift/drive select switch to lift (1)**, squeeze and hold the **red trigger switch (2)**, move the **joystick backward (3)** (platform up) and hold until desired elevation is reached. Releasing the red trigger switch or moving the joystick back to its centered position will stop the function being operated.

*NOTE: To ensure proper orientation of the desired platform function, match the color (black/white) of the directional arrow (4), to the lift/lower arrow (5) on the platform control indicator panel.*



**Raisiing platform from platform control**

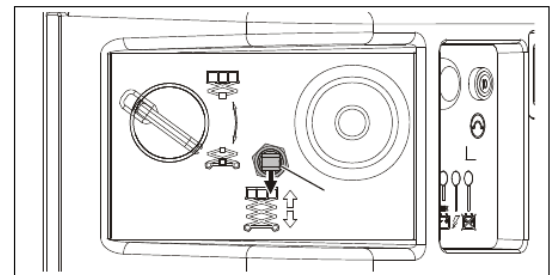
**Lowering platform**

**WARNING: ENSURE THE AREA BENEATH THE PLATFORM IS FREE OF PERSONNEL PRIOR TO LOWERING.**

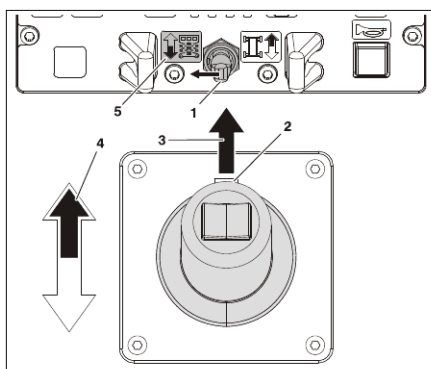
*NOTE: The machine is equipped with a descent alarm which will sound as the platform is being lowered (optional on CE units).*

**1. If operating from the ground controls -**

Position the lift switch (1) to down and hold until desired elevation is achieved or until platform is fully lowered.



**WARNING: DO NOT OPERATE FROM GROUND CONTROL STATION WITH PERSONNEL IN THE PLATFORM EXCEPT IN AN EMERGENCY.**



**1. If operating from the platform controls -**

Set the lift/drive select switch to lift (1) squeeze the red trigger switch (2) and push the joystick forward (3) (platform down) and hold until desired elevation is reached or until platform is fully lowered. Releasing the red trigger switch or moving the joystick back to its centered position will stop the function being operated.

*NOTE: To ensure proper orientation of the desired platform function, match the color (black/white) of the directional arrow (4), to the lift/lower arrow (5) on the platform control indicator panel.*

**Steering and travelling**

**WARNING: DO NOT DRIVE WITH PLATFORM RAISED EXCEPT ON A SMOOTH, FIRM AND LEVEL SURFACE FREE OF OBSTRUCTIONS AND HOLES.**

**WARNING: DO NOT ATTEMPT TO DRIVE THE MACHINE WITH THE PLATFORM RAISED UNLESS THE POT HOLE PROTECTION SYSTEM BARS HAVE BEEN FULLY LOWERED.**

**TO AVOID LOSS OF TRAVEL CONTROL OR UPSET ON GRADES AND SIDESLOPES, DO NOT DRIVE MACHINE ON GRADES OR SIDESLOPES EXCEEDING THOSE SPECIFIED.**

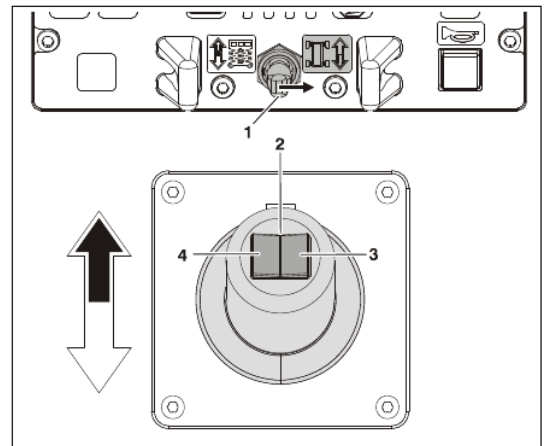
### Steering and travelling

1. Place power selector switch at the ground control station to platform.
2. Position emergency stop switch at platform control station to the ON position.

### Steering

On the platform control station, set the **lift/drive select switch (1)** to the drive position.

To steer the machine, the thumb operated **steer control switch (2)** on the joystick handle is positioned to the **right (3)** for travelling right, or to the **left (4)** for travelling left. When released, the switch will return to the center-off position and the wheels will remain in the previously selected position. To return the wheels to the straightened position, the switch must be activated in the opposite direction until the wheels are centered.

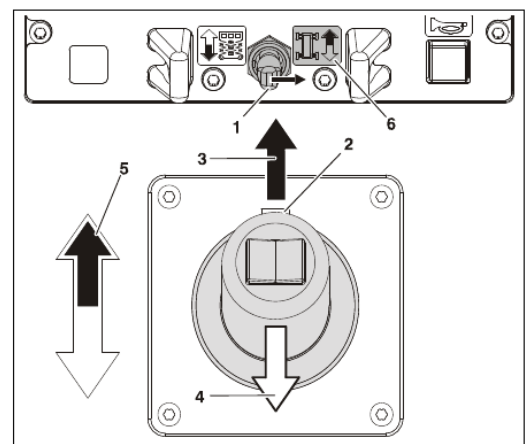


Steering from platform control

### Driving Forward and Reverse

Set the **lift/drive selector switch (1)** to drive mode. Squeeze the **red trigger switch (2)** on front of the joystick, and move the joystick **forward (3)** to drive forward or **backward (4)** to drive in reverse. The drive system is proportional so for additional drive speed, push the joystick further in the direction of travel. Releasing the red trigger switch or returning the joystick to center will stop the function being operated.

**NOTE:** To ensure proper orientation of the desired platform function, match the color (black/white) of the directional arrow (5), to the lift/lower arrow (6) on the platform control indicator panel.



Driving forward from control panel

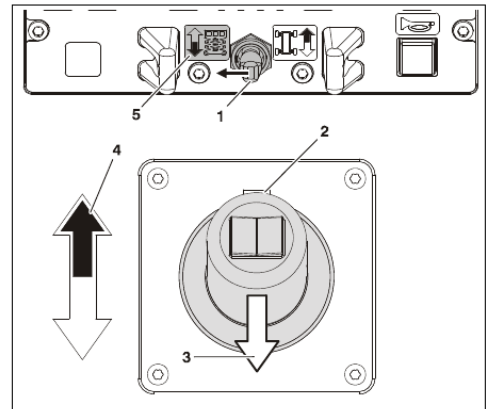
**WARNING: IF THE TILT INDICATOR WARNING LIGHT/ALARM IS ACTIVATED WHILE DRIVING WITH PLATFORM RAISED, LOWER PLATFORM COMPLETELY AND DRIVE TO A FIRM LEVEL SURFACE. TO AVOID LOSS OF TRAVEL CONTROL OR UPSET ON GRADES AND SIDESLOPES, DO NOT DRIVE MACHINE ON GRADES OR SIDESLOPES EXCEEDING THOSE SPECIFIED.**

**WARNING: DO NOT OPERATE FROM GROUND CONTROL STATION WITH PERSONNEL IN THE PLATFORM EXCEPT IN AN EMERGENCY.**

**1. If operating from the platform controls:**

Set the **lift/drive select switch to lift (1)**, squeeze and hold the **red trigger switch (2)**, move the **joystick backward (3)** (platform up) and hold until desired elevation is reached. Releasing the red trigger switch or moving the joystick back to its centered position will stop the function being operated.

*NOTE: To ensure proper orientation of the desired platform function, match the color (black/white) of the directional arrow (4), to the lift/lower arrow (5) on the platform control indicator panel.*



**Raising platform from platform control**

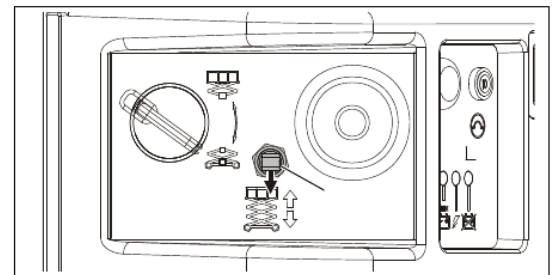
**Lowering platform**

**WARNING: ENSURE THE AREA BENEATH THE PLATFORM IS FREE OF PERSONNEL PRIOR TO LOWERING.**

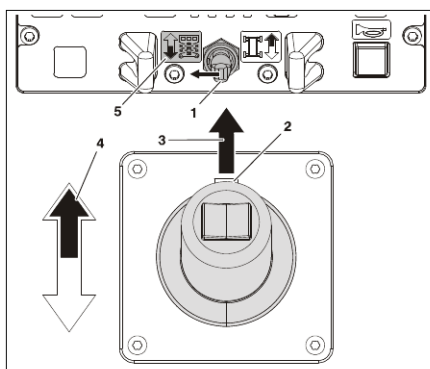
*NOTE: The machine is equipped with a descent alarm which will sound as the platform is being lowered (optional on CE units).*

**1. If operating from the ground controls -**

Position the lift switch (1) to down and hold until desired elevation is achieved or until platform is fully lowered.



**WARNING: DO NOT OPERATE FROM GROUND CONTROL STATION WITH PERSONNEL IN THE PLATFORM EXCEPT IN AN EMERGENCY.**



**1. If operating from the platform controls -**

Set the lift/drive select switch to lift (1) squeeze the red trigger switch (2) and push the joystick forward (3) (platform down) and hold until desired elevation is reached or until platform is fully lowered. Releasing the red trigger switch or moving the joystick back to its centered position will stop the function being operated.

*NOTE: To ensure proper orientation of the desired platform function, match the color (black/white) of the directional arrow (4), to the lift/lower arrow (5) on the platform control indicator panel.*

**Steering and travelling**

**WARNING: DO NOT DRIVE WITH PLATFORM RAISED EXCEPT ON A SMOOTH, FIRM AND LEVEL SURFACE FREE OF OBSTRUCTIONS AND HOLES.**

**DO NOT ATTEMPT TO DRIVE THE MACHINE WITH THE PLATFORM RAISED UNLESS THE POT HOLE PROTECTION SYSTEM BARS HAVE BEEN FULLY LOWERED.**

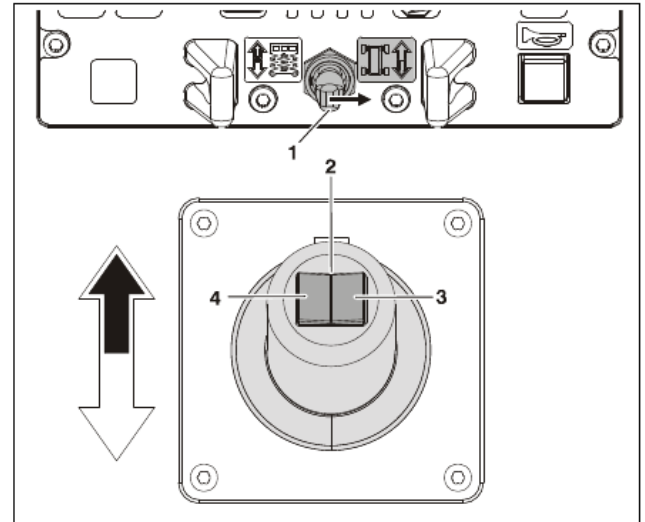
**TO AVOID LOSS OF TRAVEL CONTROL OR UPSET ON GRADES AND SIDESLOPES, DO NOT DRIVE MACHINE ON GRADES OR SIDESLOPES EXCEEDING THOSE SPECIFIED.**

1. Place power selector switch at the ground control station to platform.
2. Position emergency stop switch at platform control station to the ON position.

### Steering

On the platform control station, set the lift/drive select switch (1) to the drive position.

To steer the machine, the thumb operated steer control switch (2) on the joystick handle is positioned to the right (3) for traveling right, or to the left (4) for traveling left. When released, the switch will return to the center-off position and the wheels will remain in the previously selected position. To return the wheels to the straightened position, the switch must be activated in the opposite direction until the wheels are centered.

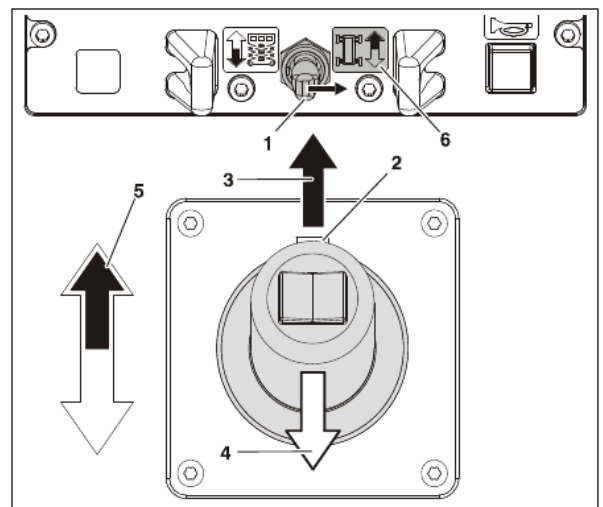


Steering from platform control

### Driving forward and reverse

Set the **lift/drive selector switch (1)** to drive mode. Squeeze the **red trigger switch (2)** on front of the joystick, and move the joystick **forward (3)** to drive forward or **backward (4)** to drive in reverse. The drive system is proportional so for additional drive speed, push the joystick further in the direction of travel. Releasing the red trigger switch or returning the joystick to center will stop the function being operated.

**NOTE:** To ensure proper orientation of the desired platform function, match the color (black/white) of the directional arrow (5), to the lift/lower arrow (6) on the platform control indicator panel.



Driving forward from platform control

**WARNING: IF THE TILT INDICATOR WARNING LIGHT/ALARM IS ACTIVATED WHILE DRIVING WITH PLATFORM RAISED, LOWER PLATFORM COMPLETELY AND DRIVE TO A FIRM LEVEL SURFACE.**

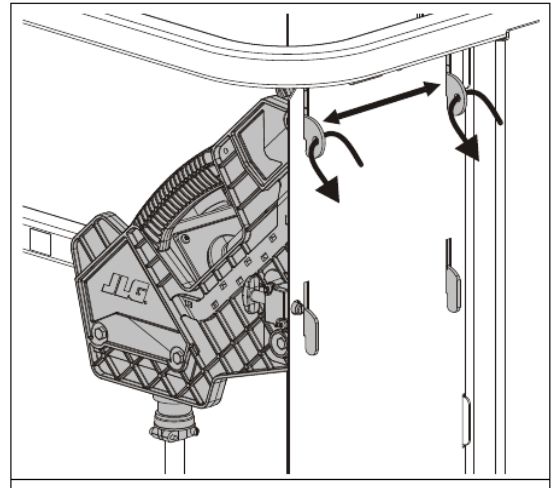
### Parking and stowing machine

1. Drive the machine to a reasonably well-protected and well-ventilated area.
2. Ensure the platform is fully lowered.
3. At the platform control station, turn the platform ground selector switch to OFF and remove the key to disable the machine and prevent unauthorised use.

**Note:** For added protection, the platform control station can be secured to its mounting plate.

4. At the ground control station, position the emergency stop switch to the OFF position.
5. If necessary, cover the instruction placards, caution and warning decals so that they will be protected from hostile environment.
6. Chock at least two wheels when parking the machine for an extended period of time.

**Note:** For added protection, the platform control station can be secured to its mounting plate.



#### Securing control station to platform

To prevent unauthorized removal, the platform control station can be secured to its mount by placing a lock through one or more of the holes located on its upper mounting tabs.

### MANDATORY PERSONAL PROTECTIVE EQUIPMENT



### TROUBLESHOOTING

Problem	Possible solution

**Do not under any circumstances attempt any repairs. Please call your local Hiredepot branch for assistance.**

This operating and safety brochure is intended as a guide only for the safe operation of this equipment. It does not override license requirements nor is it a substitute for structured operating lesson. If you are unsure about any aspect of the equipment, its capabilities or the correct usage, please call our trained staff for instruction or any questions you may have regarding the safe operation of this equipment.