
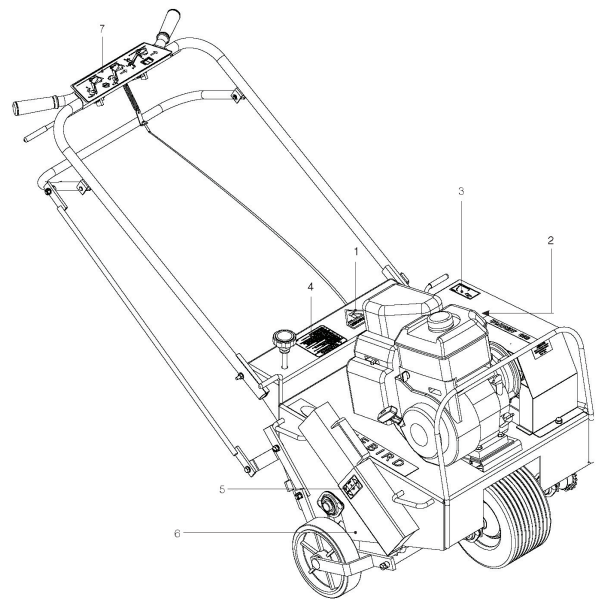


## Lawn corer

### USE COMMON SENSE AND PLENTY OF IT

1. **DO NOT** allow any person to operate lawn corer without first reading and understanding the safety precautions and operating instructions. **KNOW THE CONTROLS AND HOW TO STOP THE LAWN CORER QUICKLY IN AN EMERGENCY.**
2. **NEVER** allow children to operate the lawn corer.
3. **ALWAYS** wear protective clothing when operating the lawn corer. This includes, but not limited to: safety glasses; loose fitting gloves; steep capped boots and hearing protection. **NEVER** wear loose fitting clothing or jewellery when operating the lawn corer. Keep all clothing away from moving parts. Items could become caught in the machine, resulting in injury.
4. **ALWAYS** operate the lawn corer in a well-lit area.
5. **ALWAYS** operate lawn corer on ground only. Police the area before use. Remove any foreign objects in the digging area - bricks, rocks, wire and sticks. Locate and mark any sprinkler heads, water pipes, gas lines, electrical and telephone cables or any other hazard either below or above ground.
6. **DO NOT** allow other persons near the lawn corer. It is up to the operator to keep bystanders and animals a minimum of 6 metres away from the machine whilst in operation.
7. **NEVER** operate the lawn corer when fatigued. **ALWAYS BE ALERT.** If you become tired while operating the lawn corer, take a break. If you have any type of physical or mental condition that may be aggravated by strenuous work, consult with your physician before you operate this equipment. **NEVER** operate the lawn corer under the influence of medication, alcohol or drugs.
8.  **ALWAYS KEEP YOUR HANDS, FEET AND BODY AWAY FROM THE DIGGING AREA WHILE THE ENGINE IS RUNNING.**
9. **ALWAYS** make certain the Tyne Control lever is set at the off position while loading and unloading the lawn corer, or moving to and away from the working area.
10. **NEVER** run the machine in reverse while the tynes are rotating. Always move the tyne control lever to 'OFF' before reversing the wheels.
11. **NEVER** operate the unit without safety guards in place and in working order. Keep the unit well maintained and in good working order.
12. **DO NOT** leave the machine unattended while the engine is running.
13. **DO NOT** overspeed the engine or alter the governor settings. Excessive speed is dangerous and will shorten engine life.



- |                                |                    |
|--------------------------------|--------------------|
| 1. DANGER watch your feet      | 5. Barbells        |
| 2. Warning for carbon monoxide | 6. Removable wheel |
| 3. Chain tension               | 7. Controls        |
| 4. Safety warnings             |                    |

**Stay alert, don't get hurt**

14. **NEVER** operate the lawn corer in an enclosed area. Engine exhaust contains carbon monoxide, an odourless and tasteless poison.
15. **STOP** the engine and disconnect the spark plug lead(s) and allow the engine to cool before inspecting or performing maintenance on the lawn corer.
16. **REFUELLING**
  - Shut off engine. DO NOT REFUEL AN ENGINE WHILE OPERATING MACHINE!
  - ALLOW engine to cool down for a minimum of 5 minutes.
  - USE UNLEADED FUEL ONLY.
  - USE CLEAN, FRESH UNLEADED FUEL
  - Do not mix oil with unleaded fuel.
  - Do not overfill fuel tank. Allow space for fuel expansion.
  - Do not smoke.
  - Allow no naked flame or hot material in refuelling area.
  - Use only approved fuel containers and funnels. Remember, fuel is a potential hazard.

### SAFETY IS EVERYBODY'S BUSINESS

You alone know the operational demands and special conditions affecting the equipment in your situation and therefore assume the responsibility for developing, carrying out and enforcing the safety concepts which apply to your own operation to effect the greatest safety for yourself and the people around you.

### MANDATORY PERSONAL PROTECTIVE EQUIPMENT



### BEFORE USE

1. Ensure that all grass and weeds have been cut as low as possible.
2. If the lawn corer is to be used in clay or hard ground conditions, it is recommended to water the area thoroughly and allow sufficient time for the earth to soften.
3. Police the area. Remove any foreign objects from the area.
4. Identify and mark the location of sprinkler heads, gas pipes, telephone cables, etc.



**Do not under any circumstances attempt any repairs. Please call your local Hiredepot branch for assistance.**

This operating and safety brochure is intended as a guide only for the safe operation of this equipment. It does not override license requirements nor is it a substitute for structured operating lesson. If you are unsure about any aspect of the equipment, its capabilities or the correct usage, please call our trained staff for instruction or any questions you may have regarding the safe operation of this equipment.

When service matters.  
**hiredepot.com.au**

**GLEN IRIS**  
70 High St  
9885 4431

**FAIRFIELD**  
323 Darebin Rd  
9499 9955