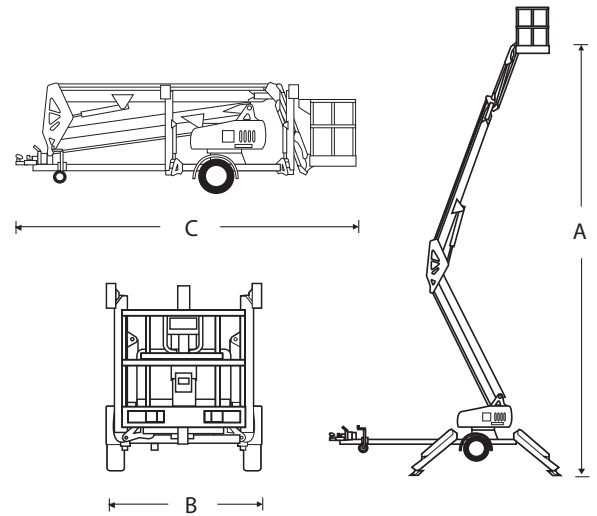


Snorkel boom lift specifications (MHP13/35)

DIMENSIONS	
Max. working height	12.6m
Max. platform height (A)	10.6m
Horizontal outreach	5.6m at 6m
Platform size	1.25m x 0.78m x 1.07m
Outrigger footprint	3.7m x 3.9m
Overall width (outriggers extended)	3.95m
Overall width (outriggers retracted) (B)	1.58m
Overall length (C)	5.99m
Transport height (D)	2.05m
PERFORMANCE	
Performance capacity	227kg
Platform capacity (with rotator)	200kg
Max. wind speed	12.5m/sec
Max. towing speed	80km/h
Levelling	Mechanical
Turnable rotation	540° non-continuous
Tyres	185 R14
Brakes	Hydraulic disc
Max. axle capacity	1,750kg
Trailer tongue weight	65kg
POWER	
Power source	Honda petrol engine 5.5hp
Hydraulic system	Proportional electro / hydraulic
WEIGHT	
Gross weight	1,360kg



STANDARD FEATURES

- High strength steel boom and base construction
- Proportional speed control
- Heavy duty tow coupling
- Heavy duty jockey wheel
- Hydraulic disc brakes
- Reliable petrol engine
- Versatile jib boom (+70° to -70°)
- Articulating boom sections for 'up & over' reach
- 600V AC rated cable to platform
- Two man steel platform
- Automatic stabilisers
- Outrigger/boom safety interlocks
- Lockable hinged covers
- Hour meter
- Lifting lugs
- Independently operated hydraulic outriggers

ALSO REFER TO:

- Snorkel boom lift operating procedure
- Snorkel boom lift hazard assessment sheet
- Snorkel boom lift risk and control measures sheet

RELATED ITEMS

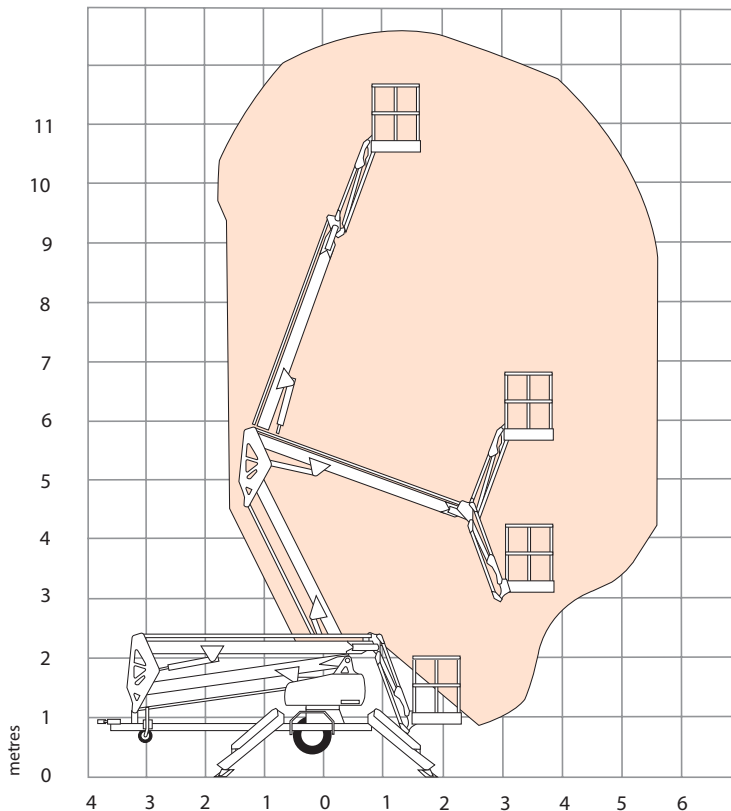
- Cherry picker
- Scissor lift
- Scaffold

Snorkel boom lift specifications (MHP13/35)

WEIGHT

Gross weight 1,360kg

WORKING ENVELOPE



OPTIONS

- 360° continuous rotation turntable
- Flashing light
- 110/240V AC GFCI power to platform
- Platform rotator
- Diesel and bi-energy options

MANDATORY PERSONAL PROTECTIVE EQUIPMENT



Do not under any circumstances attempt any repairs. Please call your local Hiredepot branch for assistance.

This operating and safety brochure is intended as a guide only for the safe operation of this equipment. It does not override license requirements nor is it a substitute for structured operating lesson. If you are unsure about any aspect of the equipment, its capabilities or the correct usage, please call our trained staff for instruction or any questions you may have regarding the safe operation of this equipment.

When service matters.
hiredepot.com.au

GLEN IRIS
 70 High St
 9885 4431

FAIRFIELD
 323 Darebin Rd
 9499 9955