

Cut & break saw

(Guide only)

BEFORE USE

1. Please read the operator's manual carefully and make sure you understand the instructions before using the machine.
2. Wear personal protective equipment (PPE).
3. Make sure no unauthorised persons are in the working area, otherwise there is a risk of serious personal injury.



Stay alert, don't get hurt

TRANSPORT

1. **WARNING:** Do not exceed 80km per hour when towing.

STARTING

1. **Decompression valve:** Press in the valve to reduce the pressure in the cylinder, this is to assist starting the power cutter. The decompression valve should always be used when starting. The valve automatically returns to its initial position when the machine starts.
2. **Stop switch:** Make sure that the stop switch (STOP) is in the left position.
3. **Choke - cold engine:** Pull the choke control fully out.
4. **Start throttle position:** Press in the throttle trigger lock, throttle control and then the start throttle lock (A). Release the throttle control and it is locked in the half throttle position. The lock releases when the throttle control is pressed in fully.
5. **Air purge:** Press the air purge diaphragm repeatedly until fuel fills the diaphragm (at least 6 times). The diaphragm need not be completely filled.

START THE ENGINE

WARNING: The blades rotate when the engine is started. Make sure they can rotate freely.

1. Grip the front handle with your left hand. Put your right foot on the lower section of the rear handle pressing the machine against the ground. Never twist the starter cord around your hand.
2. Grip the starter handle, slowly pull out the cord with your right hand until you feel some resistance (the starter pawls grip), now quickly and powerfully pull the cord.
NOTICE! Do not pull the starter cord all the way out and do not let go of the starter handle when the cord is fully extended. This can damage the machine.
3. **With a cold engine:** The machine stops when the engine fires because the choke control is pulled out. Press the choke control and the decompression valve. Pull the starter handle until the engine starts.
4. When the engine starts, quickly apply full throttle to automatically disengage fast idle.

STOPPING

CAUTION: The cutting blades continue to rotate up to a minute after the motor has stopped. (Blade coasting.) Make sure that the cutting blades can rotate freely until they are completely stopped. Carelessness can result in serious personal injury or even death.

1. Stop the engine by moving the stop switch (STOP) to the right.

MANDATORY PERSONAL PROTECTIVE EQUIPMENT



PERSONAL PROTECTIVE EQUIPMENT

You must use approved personal protective equipment whenever you use the machine. Personal protective equipment cannot eliminate the risk of injury but it will reduce the degree of injury if an accident does happen. Ask your dealer for help in choosing the right equipment.

WARNING: The use of products such as cutters, grinders, drills, that sand or form material can generate dust and vapours which may contain hazardous chemicals. Check the nature of the material you intend to process and use an appropriate breathing mask.

Long-term exposure to noise can result in permanent hearing impairment. So always use approved hearing protection. Listen out for warning signals or shouts when you are wearing hearing protection. Always remove your hearing protection as soon as the engine stops.

OTHER PROTECTIVE EQUIPMENT

CAUTION: Sparks may appear and start a fire when you work with the machine. Always keep fire fighting equipment handy.

1. Fire Extinguisher and Shovel.
2. Always have a first aid kit nearby.

GENERAL SAFETY PRECAUTIONS

This section describes basic safety directions for using the machine. This information is never a substitute for professional skills and experience.

1. Please read the operator's manual carefully and make sure you understand the instructions before using the machine.
2. Keep in mind that the operator is responsible for accidents or hazards occurring to other people or their property.
3. The machine must be kept clean. Signs and stickers must be fully legible.

ALWAYS USE COMMON SENSE

It is not possible to cover every conceivable situation you can face. Always exercise care and use your common sense. If you get into a situation where you feel unsafe, stop and seek expert advice. Contact your dealer, service agent or an experienced user. Do not attempt any task that you feel unsure of!

WARNING: The machine can be a dangerous tool if used incorrectly or carelessly, which can cause serious or fatal injury to the operator or others.

Never allow children or other persons not trained in the use of the machine to use or service it.

Never allow anyone else to use the machine without first ensuring that they have understood the contents of the operator's manual.

Never use the machine if you are fatigued, while under the influence of alcohol or drugs, medication or anything that could affect your vision, alertness, coordination or judgement.

Unauthorized modifications and/or accessories may lead to serious injury or death to the user or others. Under no circumstances may the design of the machine be modified without the permission of the manufacturer.

Do not modify this product or use it if it appears to have been modified by others.

Never use a machine that is faulty. Carry out the checks, maintenance and service instructions described in this manual. Some maintenance and service measures must be carried out by trained and qualified specialists.

Always use genuine accessories.

This machine produces an electromagnetic field during operation. This field may under some circumstances interfere with active or passive medical implants. To reduce the risk of serious or fatal injury, we recommend persons with medical implants to consult their physician and the medical implant manufacturer before operating this machine.

WATER COOLING

1. Water cooling must always be used. This cools the blades and increases their life and prevents dust build-up.
2. There is a restrictor in the water hose that reduces the water flow.
3. NB! It is important not to use a too high water flow without throttling as the belt can then slip.

WORK AREA SAFETY

WARNING: The safety distance for the power cutter is 15 metres. You are responsible to ensure that animals and onlookers are not within the working area. Do not start cutting until the working area is clear and you are standing firmly.

1. Observe your surroundings to ensure that nothing can affect your control of the machine.
2. Ensure that no one/nothing can come into contact with the cutting equipment or be hit by parts if the blade breaks.
3. Do not use the machine in bad weather, such as dense fog, heavy rain, strong wind, intense cold, etc. Working in bad weather is tiring and can lead to dangerous conditions, e.g. slippery surfaces.
4. Never start to work with the power cutter before the working area is clear and you have a firm foothold. Look out for any obstacles with unexpected movement. Ensure when cutting that no material can become loose and fall, causing operating injury. Take great care when working on sloping ground.

WORK AREA SAFETY (CONTINUED)

5. Ensure that the working area is sufficiently illuminated to create a safe working environment.
6. Make sure that no pipes or electrical cables are routed in the working area or in the material to be cut.

At a low water pressure, for example when the water tank is used, the restrictor can be dismantled to give the correct water flow.

BASIC WORKING TECHNIQUES

WARNING: When cutting vertically, always cut from the top of the cut and down. Never cut from the bottom of the cut and up. This can cause a kickback and result in personal injury.

Do not pull the power cutter to one side, this can cause the blades to jam or break resulting in personal injury.

1. This machine is only to be used with Husqvarna's specially developed diamond blades intended for Cut-n-Break. The blades have an integrated belt pulley and are approved for freehand cutting. The machine shall not be used with any other type of blade, or for any other type of cutting.
2. Remain at a distance from the blades when the engine is running.
3. Never move the machine when the cutting equipment is rotating.
4. Never use the kickback zone of the blade for cutting.
5. Never cut above shoulder height. Never cut from a ladder. Use a platform or scaffold when working at high altitude.
6. Support the work piece in such a way that it is possible to predict what will happen, and so that the cut remains open while cutting.
7. Always hold the machine in a firm grip with both hands. Hold it so that the thumbs and fingers grip round the handles.
8. Stand at a comfortable distance from the work piece.
9. Check that the blades are not in contact with anything when the machine is started.
10. Apply the cutting blade gently with high rotating speed (full throttle) Maintain full speed until cutting is complete. Let the machine work without forcing or pressing the blade.
11. Cut in the same direction when cutting into an existing cut. Make certain that the cut is wide enough and that the blades are not angled in the cut. This can cause kickback.
12. Always cut from top to bottom. Remove the cutter and use a crowbar to remove the material that remains between the cut.
13. Follow the same saw cut, but further in the work piece, and repeat the work with the crowbar.
14. Repeat this working method until the required cutting depth is achieved.
15. The blade guards are designed to easily adapt to how deep in the work piece the power cutter is moved.

KICKBACK

WARNING: Kickback can be very sudden and violent, throwing the saw back at you. It can cause serious or even fatal injuries. It is vital you understand what causes kickback and how to avoid it using proper cutting technique.

KICKBACK (CONTINUED)

Kickback is a sudden, rearward motion of the saw that can occur if the blades are stalled (pinched, jammed, twisted) in the so called kickback zone. Most kickbacks are small and felt as small "jerks" in the front handle. However, kickback can be very powerful. If you are not paying attention or have a poor grip the saw can be thrown all the way back at you.

Cause of kickback

Kickback is caused if you are cutting with the kickback zone of the blade for example when cutting "upwards" or towards you.

General rules

1. Never cut upwards or towards you so that the kickback zone becomes actively cutting.
2. Always hold the machine in a firm grip with both hands. Hold it so that the thumbs and fingers grip round the handles.
3. Keep a good balance and a firm foothold.
4. When cutting vertically, always cut from the top of the cut and down.
5. Always cut at full throttle.
6. Do not cut with the upper quadrant (kickback zone) of the blade.
7. Avoid twisting or pushing the blades sideways in the cut. This can cause kickback.
8. Take care when inserting the blade in an existing cut. Make certain that the cut is wide enough and that the blades are not angled in the cut. This can cause kickback.
9. Stand at a comfortable distance from the work piece.
10. Never cut above shoulder height.
11. Never cut from a ladder. Use a platform or scaffold when working at high altitude.
12. Be on the alert in case the work piece moves or anything else occurs, which could cause the cut to close and the blades to jam.

Pull in

Pull in occurs when the blades' lower sections suddenly stop or when the cut closes. (To avoid, see the instructions under the heading "Basic rules" and "Jamming/rotation".)

Pinching / rotation

If the cut is pressed together this can lead to jamming. The machine can be pulled down suddenly with a very powerful jerk.

How to avoid pinching

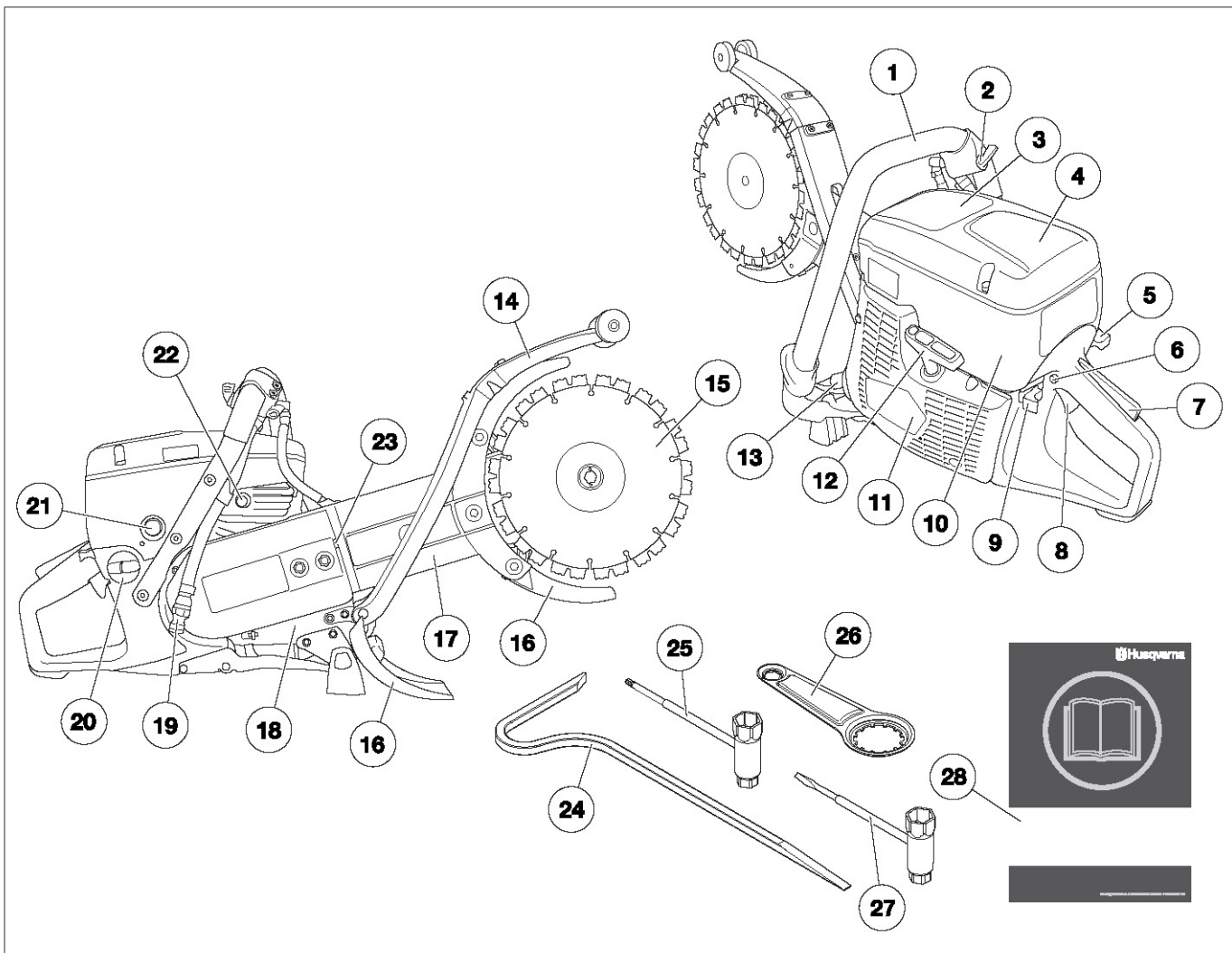
Support the work piece in such a way that the cut remains open during the cutting operation and when the cut is finished.

Check the engine speed

Use a revolution counter regularly to check the engine speed at the working temperature, at full throttle and without a load.

TRANSPORT & STORAGE

1. Secure the equipment during transportation in order to avoid transport damage and accidents.
2. Store the machine and its equipment in a dry and frost proof place.
3. Store the equipment in a lockable area so that it is out of reach of children and unauthorized persons.



WHAT IS WHAT ON THE MACHINE?

- | | | | |
|-----|---------------------|-----|---------------------------|
| 1. | Front handle | 15. | Blades |
| 2. | Water tap | 16. | Blade guards |
| 3. | Warning decal | 17. | Cutting arm |
| 4. | Air filter cover | 18. | Rating plate |
| 5. | Choke control | 19. | Water connector |
| 6. | Start throttle lock | 20. | Fuel tank |
| 7. | Throttle lockout | 21. | Air purge |
| 8. | Throttle control | 22. | Decompression valve |
| 9. | Stop switch | 23. | Belt tensioner |
| 10. | Cylinder cover | 24. | Breaking tool |
| 11. | Starter | 25. | Combination spanner, torx |
| 12. | Starter handle | 26. | Bearing tool |
| 13. | Muffler | 27. | Combination spanner, flat |
| 14. | Splash guard | 28. | Operator's manual |

TROUBLESHOOTING

Problem	Possible solution

Do not under any circumstances attempt any repairs. Please call your local Hiredepot branch for assistance.

This operating and safety brochure is intended as a guide only for the safe operation of this equipment. It does not override license requirements nor is it a substitute for structured operating lesson. If you are unsure about any aspect of the equipment, its capabilities or the correct usage, please call our trained staff for instruction or any questions you may have regarding the safe operation of this equipment.