

Scissor lift - FREEWHEEL OVERRIDE #3549 Haulotte

(Guide only)

Access freewheel controls by opening rear hatch. This hatch is also the steps into the platform and is unlocked by unscrewing the black knob on the right hand side.

Refer to picture:

1. Close tap (**knob 1**)
2. Open tap (**knob 2**)
3. Pump hand pump **HP1** until brake is released.

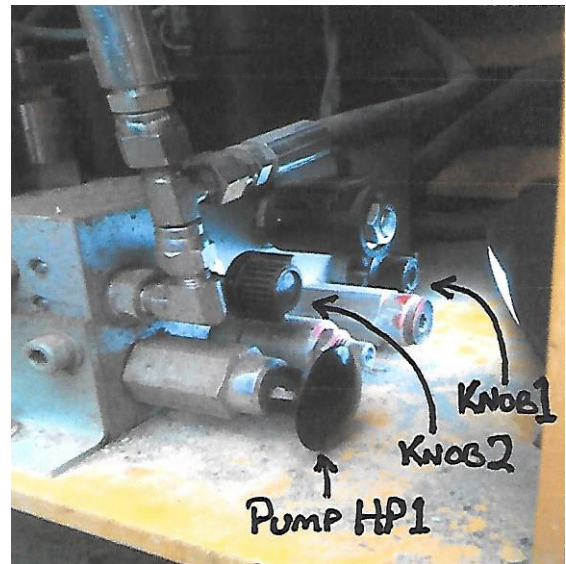
WARNING

With brake released there are now no brakes.

After moving machine:

1. Open tap (**knob 1**)
2. Close tap (**knob 2**)

This will allow brakes to operate normally.



Other controls:



Do not under any circumstances attempt any repairs. Please call your local Hiredepot branch for assistance.

This operating and safety brochure is intended as a guide only for the safe operation of this equipment. It does not override license requirements nor is it a substitute for structured operating lesson. If you are unsure about any aspect of the equipment, its capabilities or the correct usage, please call our trained staff for instruction or any questions you may have regarding the safe operation of this equipment.